

GlobeXplorer's ImageAtlas provides instant online access to the world's largest aerial image library. Users can log in and locate properties and neighborhoods, interact with images by panning and zooming, and cut/paste, download, or print images for reports and presentations.

ImageAtlas is an ideal online solution for real estate firms, insurance companies, public safety agencies or any company that wants to see properties and locations without expensive, time consuming site visits. The ImageAtlas subscription service provides users with the highest resolution imagery available for their requested location. The ImageAtlas can be accessed by multiple users within a firm and offers a variety of features including the ability to overlay images and maps. ImageAtlas requires no software plug-in or systems integration. All you need is a web browser!

**Benefits:**

- Saves time – users can view property assets, evaluate site access and plan projects from a desktop without visiting the property
- Easy to use – no systems integration or support required and no plug in to install. Users simply log on and start browsing. ImageAtlas can be accessed from anywhere with an Internet connection
- Saves money – users are not required to spend money ordering individual aerial photos of various properties. With ImageAtlas, an entire firm or agency can access the specific imagery at any time
- Centralized access – firms with multiple offices can easily manage system use with simple administration functions and departmental logins.

**Features:**

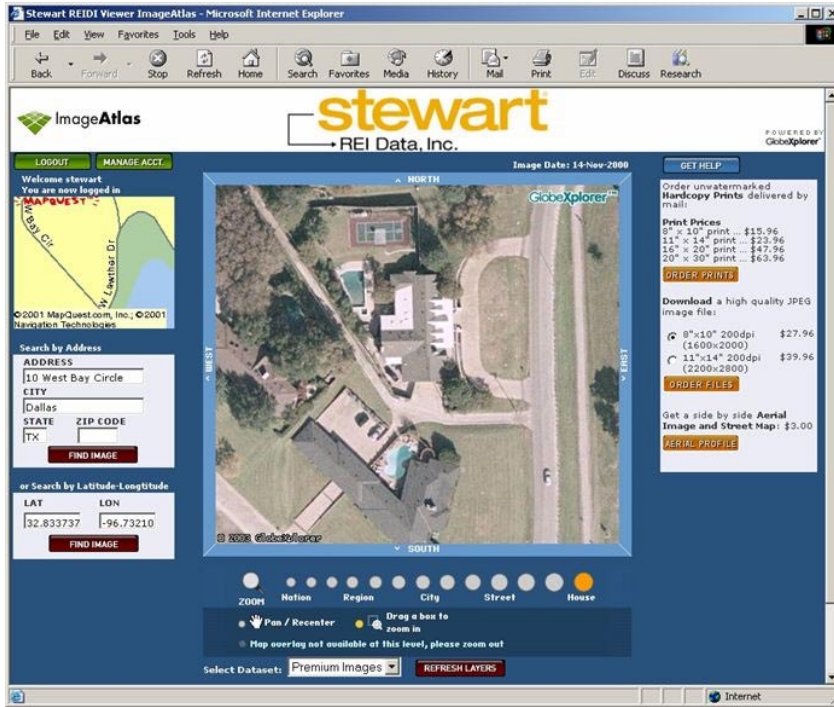
- No software installation or start-up costs
- Subscribe to the viewer monthly or annually and receive a discount of more than 20% on all product pricing.
- Easy searching – users can enter any address or simply type a city and state to find aerial images
- Images and street maps can be copied, saved, edited, and printed
- Nationwide street maps and aerials can be interactively viewed together
- Watermarked image viewing is free of charge. Un-watermarked images can be seen by subscribing to the viewer.
- Nationwide topographic maps can be viewed in addition to aerial images
- A secure, online shopping cart handles each image print or file download transaction
- Link the viewer to your website, or to any specific property address
- A personalized viewer page can be co-branded for your company

**Target Customers:**

ImageAtlas is ideal for real estate firms, insurance agencies, appraisers, public safety offices, Internet portals, and any company that wants easy, affordable access to aerial / satellite imagery and maps.



**ImageAtlas Viewer Example:**



**Aerial Profile Product Example:**

